

2010+ RANGE ROVER SPORT & LAND ROVER LR4 REMOTE STARTER

INSTALLATION INSTRUCTIONS

If it is your first time installing this product, these instructions cover every detail of the installation. By the second or third, you should be able to skip to the last page for the wire colors.

A few points:

- Σ This system is like others that does require installing a Key Fob. Please read the page on why the customer *DOES NOT* have to order a *THIRD* Fob.
- Σ When installing the Key Fob, it can be hidden in the dash board and we recommend letting the customer know the location. But, from experience, we have found that customers like to have fairly easy access to it. They are willing to accept the slight compromise in security, especially since the key fob battery is removed.
- Σ By advising them to hide the key fob battery elsewhere in the vehicle, they can regain full control in an emergency.

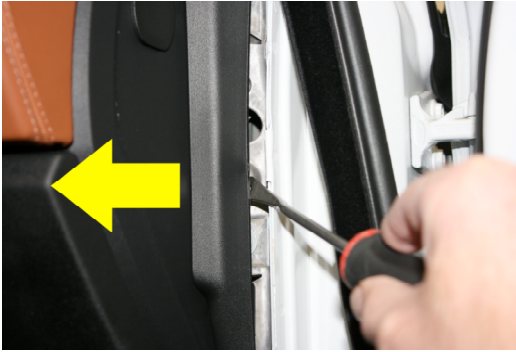
Pry up the front of the sill plate. It does not have to be removed:



Pull back the felt weatherstrip from the A-Pillar:



Pry off the trim piece, held by one snap in the middle:



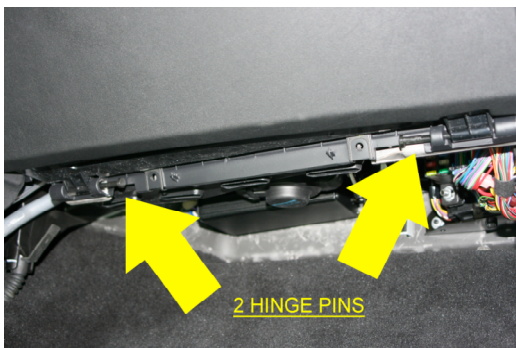
Pry off the passenger kick panel:



Remove the plastic panel under the dash. Unplug the light:

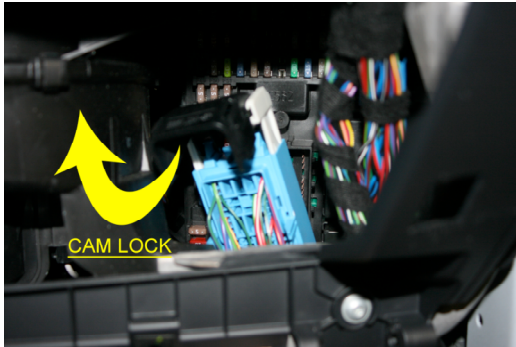


Push the 2 plastic hinge pins towards the center of the glove compartment and remove the compartment:

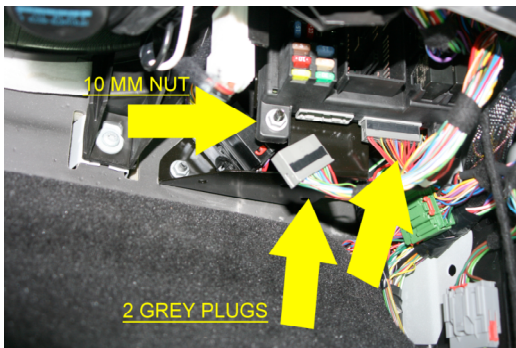


The trickiest part of the installation is removing the Central Junction Box (CJB, which is the fuse block behind the glove compartment). But when it is removed, you will have access to all the necessary wires.

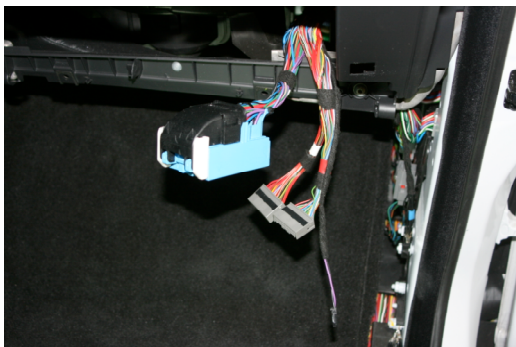
Disconnect the large Blue, Orange and Green connectors on the front. They are removed by releasing the Black CAM Lock. After removal, close the CAM Lock so the connectors can be maneuvered out of the way:



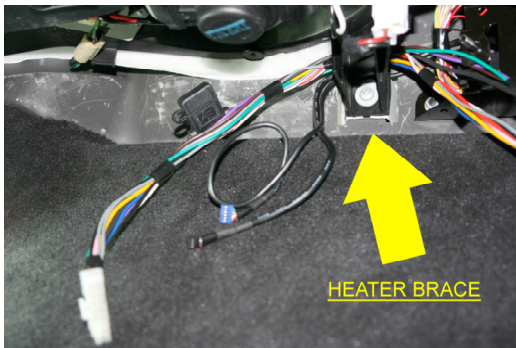
Disconnect the 2 Grey Connectors from the bottom of the CJB. Remove the 2 10mm nuts. While pulling the CJB partially out, reach up behind and unplug both connectors held by CAM Locks. They are also Green and Orange, but smaller. Later in the instructions is a picture of what they look like:



The large Blue Connector and 2 Grey Connectors can be pulled through the glove compartment opening for easier access. Maneuver the CJB out of the dash:

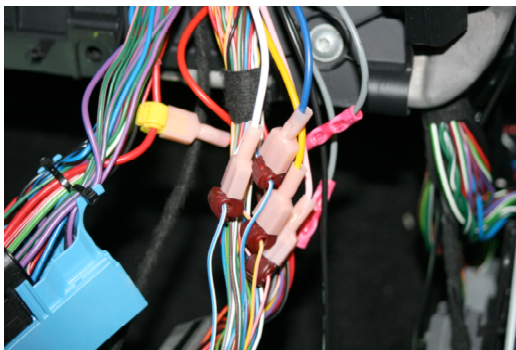


Install the antenna to the right of the mirror and route the wire down the passenger A-pillar to the underside of the dash. Pass the 16-Pin, Antenna and Drone Cable (if used) over the heater brace. Run the 3 wires for the rear of the CJB behind the metal bracket so they will not get pinched when the CJB is reinstalled:



Connect all of the wires, as documented on the last page.

This shows the Blue and Grey Connectors:



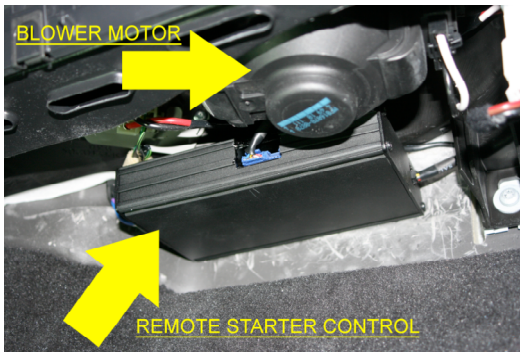
Here are the Orange and Green connectors that you had to blindly disconnect from the back of the CJB. Again, be sure to run the 3 wires behind the black metal bracket so they do not get pinched upon reassembly:



Refer to the User's Manual for how to disassemble the Key Fob and insert the Copper Bypass. It can be hidden in the dash, or you can tuck the Key Fob behind the glove compartment, making it easily accessible for the customer:



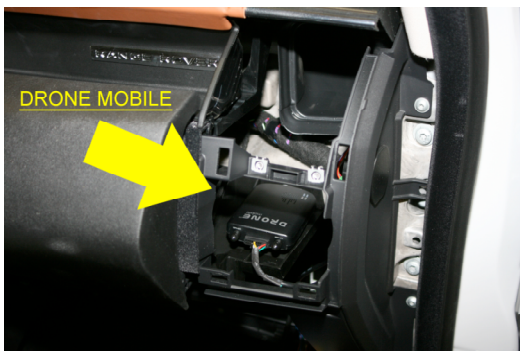
Plug the Connectors into the Starter, then it will pressure fit between the blower motor housing and the firewall. The bottom panel will hold it in place:



If installing a Drone Mobile; remove the right vent cover on top of the dash. Then after removing the T20 Torx screw, pull the entire vent assembly straight out:



Mount the Drone on the flat surface behind it. You may need some additional double stick padding or Velcro:



<u>CJB Plug & Location</u>	<u>Pin #</u>	<u>Vehicle Color</u>	<u>Starter Color</u>
Large Blue	29	Thickest Red	Red
10mm Bolt - Pass. Kick		With other grounds	Black
Orange - behind (Use the thinner GRN/PUR. Do not confuse it with 2 other PUR/GRN)	6	Green/Purple	Purple
Green - behind	5	Black	Brown
Green - behind (There are 2 WHT/GRN, use the one that is paired up with the WHT/RED)	18	White/Green	Green
Smaller Grey - on side	17	Blue/White	Blue
Smaller Grey - on side	18	White/Blue	White
Smaller Grey - on side	8	Yellow/pink	Yellow
Smaller Grey - on side	9	Pink/Red	Pink
Larger Grey - on side	23	Red/Orange	Both Orange

THERE ARE 2 RED/ORANGE WIRES - USE THE ONE BETWEEN THE BLACK WIRE AND THE OTHER RED/ORANGE WIRE (PIN 23, NOT 22) CUT THE RED/ORANGE WIRE AND CONNECT THE ORANGE WIRES TO THE CUT ENDS (DOES NOT MATTER WHICH GOES TO WHICH)

Test the system. No programming is required.

Give the customer the Coin Battery and other parts in one of the small Zip-Loc bags, along with the instructions.

Technical Questions: 603-481-7000 or 800-717-7505

If you get voicemail, please DO leave a message, we DO call back as SOON as possible (even late and weekends).

Replacing a remote: If you are familiar with CompuStar programming, this uses the same procedure. Cycle the Ignition 5 Times within 7 Seconds, relays will click in the unit, then press the button on the new remote.

With this unit, there isn't an actual ignition wire hooked up to the vehicle.

To program: access the Starter, locate the small black "Programming Button" next to the main 16-Pin Molex connector. Press it 5 Times, as if it was the ignition.